

Halifax Area

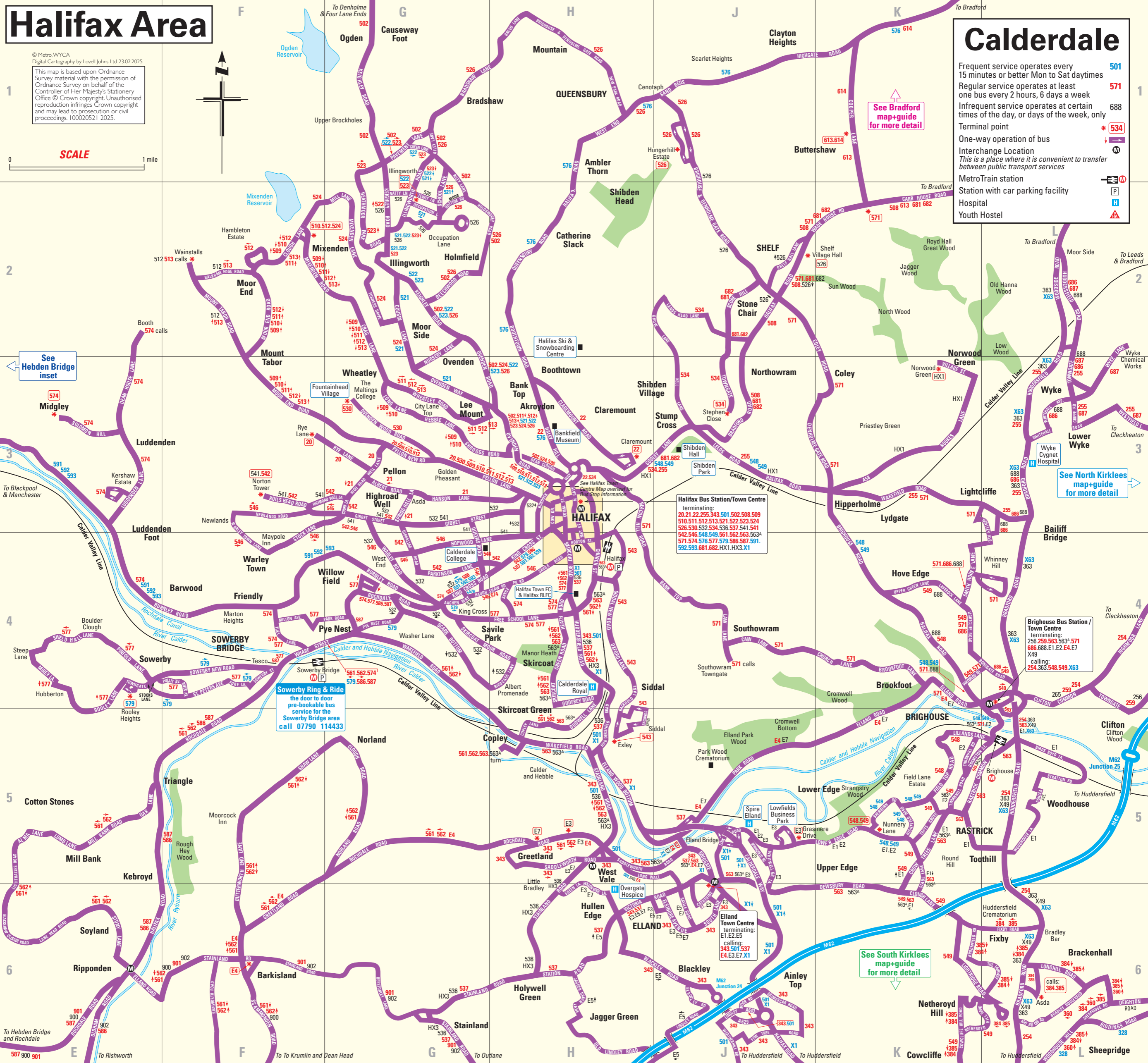
© Metro, WYCA
Digital Cartography by Lovell Johns Ltd 23.02.2025
This map is based upon Ordnance Survey material with the permission of Ordnance Survey on behalf of the Controller of Her Majesty's Stationery Office © Crown copyright. Unauthorised reproduction infringes Crown copyright and may lead to prosecution or civil proceedings. 100020521 2025.



SCALE 1 mile

Calderdale

- Frequent service operates every 15 minutes or better Mon to Sat daytime **501**
- Regular service operates at least one bus every 2 hours, 6 days a week **571**
- Infrequent service operates at certain times of the day, or days of the week, only **688**
- Terminal point *** 534**
- One-way operation of bus **↓**
- Interchange Location **M**
- This is a place where it is convenient to transfer between public transport services
- MetroTrain station **M**
- Station with car parking facility **P**
- Hospital **H**
- Youth Hostel **A**



See Bradford map+guide for more detail

See Hebden Bridge inset

See North Kirklees map+guide for more detail

Halifax Bus Station/Town Centre
terminating:
20.21.22.25.34.35.50.51.52.53.54.55.56.57.58.59
510.511.512.513.521.522.523.524
526.530.532.534.536.537.541.541
542.546.548.549.561.562.563.563A
571.574.576.577.579.586.587.591.
592.593.681.682.HX1.HX3.X1

Sowerby Ring & Ride
the door to door pre-bookable bus service for the Sowerby Bridge area
call 07790 114433

Elland Town Centre
terminating:
E1.E2.E5
calling:
343.501.537
E4.E3.E7.X1

Brighouse Bus Station / Town Centre
terminating:
256.259.563.563A.571
686.688.E1.E2.E4.E7
X49
calling:
254.363.548.549.X63

See South Kirklees map+guide for more detail

calls: 384.385